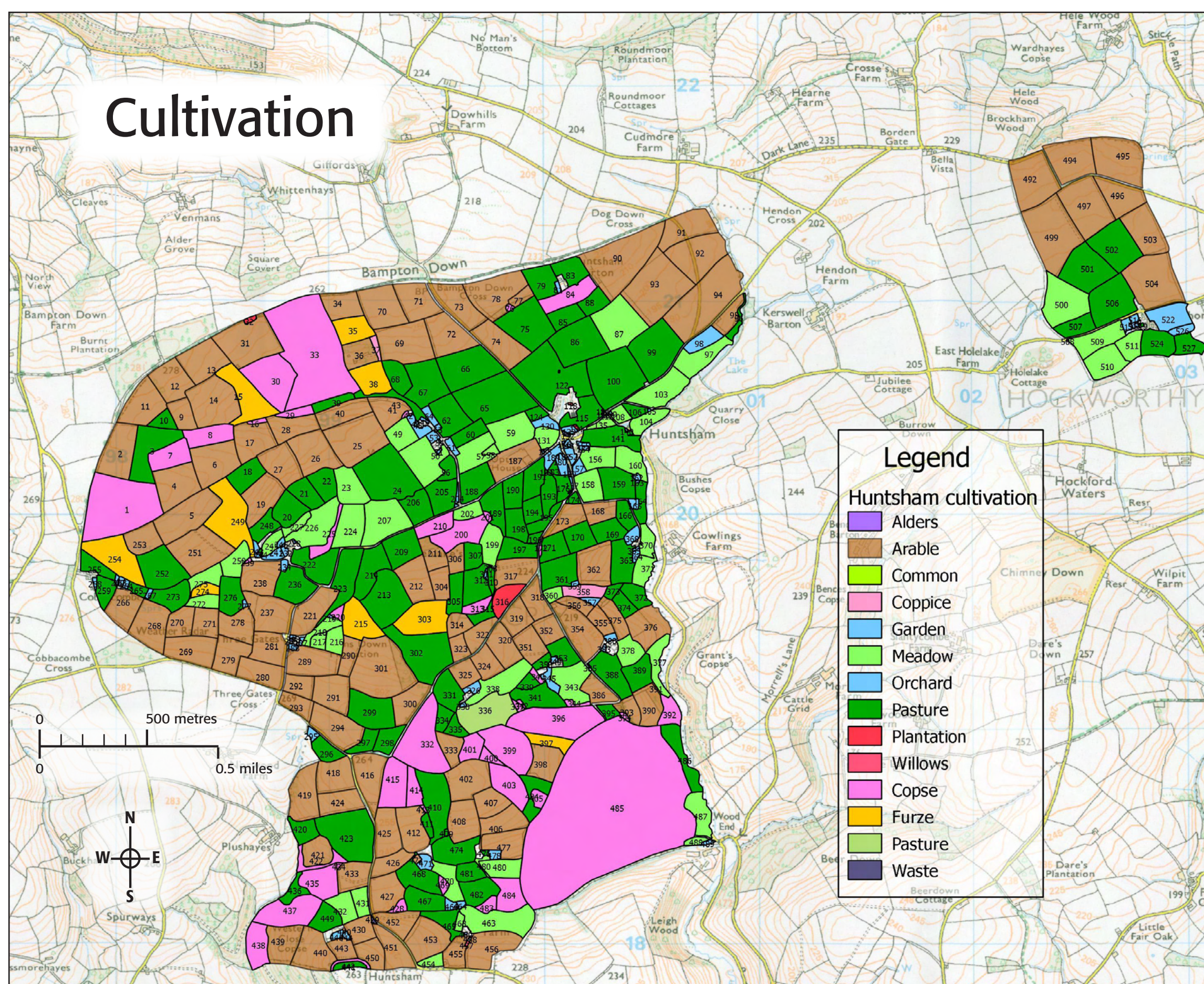
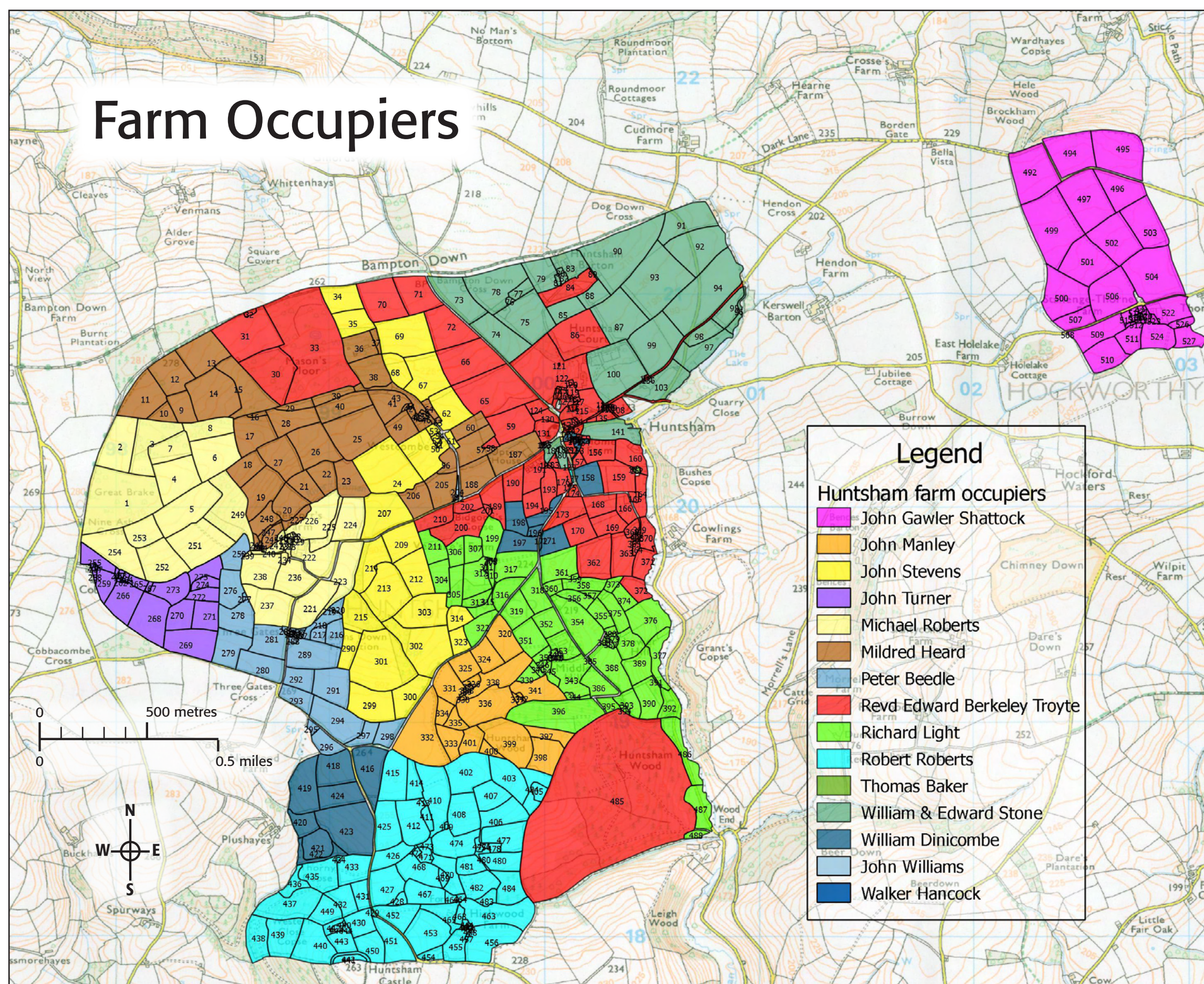
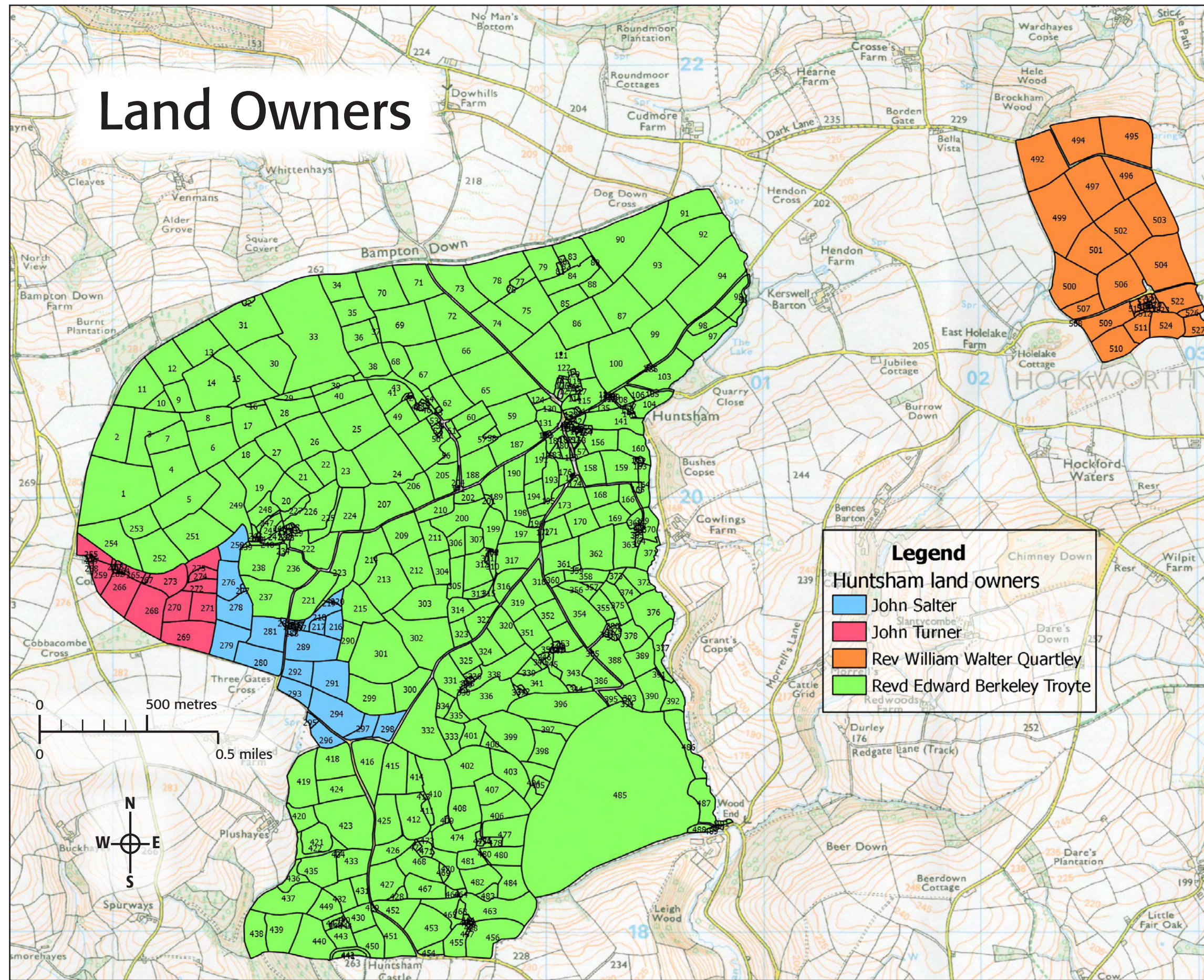


Huntsham Parish Tithe Map and Apportionments, 1840



Produced nationally following the Tithe Commutation Act (1836) that established how tithes in kind could be converted to money payments. Nothing remotely resembling this coverage, detail and accuracy had been attempted since the Domesday Book of 1086. Note that Stallegenhorne was an outlying part of Huntsham Parish in 1840 and 1841 (see census below).

Field names and numbers	Field names and numbers	Field names and numbers	Field names and numbers
1 Great Brake	89 Road	178 Cottage	267 Garden
2 Mally Tucker	90 Great Dog Down	179 Orchard	268 Seven Acres
3 El Brake	91 Satchells Moor	180 Widgerys Orchard	269 Top Field
4 Higher Down	92 Little Satchells	181 Waste	270 Bottom Close
5 Nine Acres	93 Great Satchells	182 Part of Widgerys Orchard	271 Three Acres
6 Lower Down	94 Waterlands	183 Cow Moor	272 The Brake
7 Ash Copse	95 Part of Long Orchard	184 Lower Widgerys Orchard	273 Moor
8 Part of Lower Down	96 Part of Long Orchard	185 Garden	274 Brake
9 Brimley Close	97 Long Meadow	186 Cottage	275 Lower Meadow
10 Part of Brimley Close	98 Long Orchard	187 Lower Selbrooks	276 Smallacks Close
11 Three Corner Close	99 Broom Park	188 Middle Selbrooks	277 Smallacks Orchard
12 Square Close	100 Broad Park	189 Cow Moor	278 Lower Middle Close
13 Higher Moor	101 Linhay	190 Cow Moor	279 Higher Middle Close
14 Great Close	102 Millhams Meadow	191 Cow Moor	280 Higher Furze Close
15 Lower Moor	103 Mill Meadow	192 Cow Moor	281 Lower Furze Close
16 Higher Ball Copse	104 Mill Meadow	193 Cow Moor	282 Linhay and Yard
17 Higher Ball	105 Garden	194 Cow Moor	283 Orchard
18 Top Field	106 The Acre	195 Long Meadow	284 Farm House
19 Eight Acres	107 Postcott	196 Lousay Down	285 Garden
20 Moor	108 Postcott	197 Tom Bertons Field	286 Barn Linhay & Yard
21 Moor	109 Postcott	198 Cow Moor	287 Orchard
22 Moor	110 Postcott	199 Venlakes Meadow	288 Garden
23 Park Meadow	111 Postcott	200 Bidgods Copse	289 Fore Close
24 The Park	112 Postcott	201 Blanks Plot Copse	290 Higher Long Close
25 Great Seldrons	113 Postcott	202 Moor	291 Great Plain Close
26 Nine Acres	114 Postcott	203 Cottage	292 Little Plain Close
27 Seven Acres	115 The Lawn	204 Orchard and Garden	293 Part of Little Laptum
28 Middle Ball	116 Church and Yard	205 Higher Selbrooks	294 Great Laptum
29 Copse in Middle Ball	117 Huntsham House & Offices	206 New Meadow	295 Laptum Orchard
30 Masons Brake	118 Shrubbery	207 Waterland Meadow	296 Lower Laptum
31 Fir field	119 Yard Stables & Linhays	208 Lower Laptum	297 Furzey Laptum
32 Plantation	120 Barn Barton & Coach House	209 Lower Laptum	298 Furzey Laptum
33 Mersons Moor	121 Higher Kennel	210 Part of Bidgods Copse	299 The Graton
34 Higher Ten Acres	122 The Park	211 Lower Bidgods Copse	300 Beech Close
35 Lower Ten Acres	123 Slade Plot	212 Higher Pondford	301 Collins Down
36 Higher Benches	124 Slade Plot	213 Ball	302 Calven Close
37 Copse in Higher Benches	125 Lower Kennel	214 Ponsford Meadow	303 Farthings Brake
38 Lower Benches	126 Higher Pond	215 Lower Long Close	304 Long Close
39 Bakins Leaze	127 Kennel Orchard and Part of the Lawn	216 Great Meadow	305 Hither Long Close
40 Lower Ball	128 Lower Pond	217 Little Meadow	306 Hither Bidgods Copse
41 Furze Close	129 Waste in Road	218 Long Meadow	307 Venlakes Moor
42 Copse	130 Slade Orchard	219 Garden	308 Garden
43 Coil	131 Hayes	220 Garden	309 Garden
44 Higher Court	132 Kitchen Garden	221 Higher Long Close	310 Old Orchard
45 Orchard	133 Plantation	222 Splatts	311 Garden
46 House Barns & Courtyard	134 Mill Orchard	223 Lower Long Close	312 Beech Close
47 Garden	135 Mill Orchard	224 Quarry Close	313 Starve Acre Copse
48 Great Orchard	136 Road	225 Perrots Copse	314 Lower Stubbs
49 Little Seldrons	137 Mill Pond	226 Great Meadow	315 Stubbs Meadow
50 Five Yards	138 Stable and Courtyard	227 Moorhays Meadow	316 Plantation
51 Garden	139 Mill and House	228 Garden	317 Way Close
52 House Barn and Courtyard	140 Garden	229 Garden	318 Lower Cross Close
53 Home Orchard	141 Barn Meadow	230 Back Court Barn & Linhays	319 Higher Cross Close
54 Garden	142 Hay Yard	231 House and Garden	320 Lower Beech Close
55 Road	143 Copse	232 Garden	321 Road
56 Selbrooks Meadow	144 Smiths Shop	233 Road	322 Stubbs
57 Great Meadow	145 Cottage	234 Orchard	323 Road
58 Little Hundred Acres	146 Garden	235 Road	324 Middle Beech Close
59 Slade Meadow	147 Plot	236 Green Close	325 Higher Beech Close
60 Shelves	148 Garden	237 The Ball	326 Garden
61 Long Orchard	149 Yard Stables & Linhays	238 Quarry Close	327 Cottage
62 Mow Close	150 The Rectory House & Offices	239 Copse	328 Barn and Linhay
63 Garden	151 Green Court	240 Road	329 Stack Yard
64 Lower Orchard	152 Barn Orchard	241 Orchard	330 Garden
65 Slade	153 Barn Linhay & Courtyard	242 Cottage	331 Barns Close
66 Lower Loman Down	154 Back Garden	243 Garden	332 Fellham Brake
67 Seven Acres	155 Little Orchard	244 Plot	333 The Moor
68 Course Moor	156 Cow Pasture	245 Great Meadow	334 Field under Fellhams
69 Twelve Acres	157 Higher Orchard	246 Orchard	335 Three Corner Close
70 Higher Priors Down	158 Higher Cow Pasture	247 Road	336 Great Field
71 Priors Down	159 Hedge Land Down	248 Moor	337 Copse in Great Field
72 Higher Loman Down	160 Hedge Land Meadow	249 Home Moor	338 The Meadow
73 Higher Long Down	161 Hedgeland Cottage	250 Smallack Meadow	339 Middle Hill Lower Moor
74 Lower Long Down	162 Garden	251 Ten Acres	340 Copse in Middle Hill
75 Park Moor	163 Garden	252 Middle Moor	341 Lower Moor
76 Quarry and Copse	164 Lower Moor	253 Four Acres	342 Copse in Lower Field
77 Little Field	165 Orchard	254 Higher Moor	343 Middle Hill Meadow
78 Higher Park	166 Cleve	255 Little Meadow	344 Copse in Middle Hill
79 Middle Park	167 Road	256 Stack Yard	345 Middle Hill Orchard
80 Stack Yard	168 French Grass Field	257 House Barn & Yard	346 Nursery
81 Garden	169 Lower Ball	258 Garden	347 Barn Linhay & Courtyard
82 House Barn and Courtyard	170 Middle Ball	259 Barns Close	348 Cottage
83 Lower Park	171 Higher Ball	260 Garden	349 Garden
84 Wilderness	172 Copse in Higher Ball	261 Cottage	350 Middle Hill Moor
85 Little Park Moor	173 Brimj Close	262 Linhay and Yard	351 Broad Close
86 Weston Black Lands	174 Fir Plot	263 Garden	352 Hills Close
87 Eastern Black Lands	175 Fir Plot	264 Orchard	
88 Wilderness Orchard	176 Cow Moor	265 Little Moor	
	177 Garden	266 Linhay Close	

Huntsham Parish 1841 Census

This was the first national census. Note 13 servants at Huntsham Court, Redwood's corn mill at the triangle, a Parish house, the Smithy in the village centre. There were nine farms (including Stallegenhorne).

Address	Surname	Forenames	Sex	Age	Occupation	Address	Surname	Forenames	Sex	Age	Occupation	
Huntsham Court	Troyte	Edward	M	75	Rector	Parish House	Disney	Mary	F	80	Pauper	
	Knighth	Charles	M	70	Navy Hp		Disney	Mary	F	60	Pauper	
	Bullock	George	M	40	Independent		Disney	Harriet	F	2	Pauper	
	Bullock	Maria	F	40	-	Cottage	Rosseter	Robert	M	70	Pauper	
	Bullock	George	M	11	-		Criddle	Elizabeth	F	48	Pauper	
	Bird	William	M	60	Male Servant	Higher Westcombe	Heard	Mildred	F	45	Farmer	
	Norris	Hugh	M	45	Male Servant		Heard	Richard	M	20	-	
	Dinnicombe	William	M	65	Male Servant		Heard	John	M	15	-	
	Stone	Robert	M	35	Male Servant		Heard	Jane	F	15	-	
	Dinnicombe	James	M	15	Male Servant	Hedgeland	Tap	William	M	13	Male Servant	
	Moore	Richard	M	15	Visitor		Ford	William	M	30	Agricultural Labourer	
	Moore	Mary	F	20	Visitor		Ford	Esther	F	45	-	
	Fry	Sarah	F	25	Female Servant		Ford	Elizabeth	F	6	-	
	Hayward	Jane	F	15	Female Servant	Cottage	Ford	John	M	3	-	
	Forward	Jane	F	15	Female Servant		Roberts	Robert	M	30	Shoe Maker	
	Stone	Marina	F	25	Female Servant		Roberts	Mary	F	40	-	
	Lindon	Sarah	F	25	Female Servant		Roberts	Michael	M	6	-	
	Odler	Jane	F	15	Female Servant		Roberts	Robert	M	4	-	
	Callard	Betty	F	50	Female Servant		Roberts	Katherine	F	1	-	
	Burnell	Susan	F	50	Female Servant		Perry	Thomas	M	25	Shoe Maker	
Huntsham Mills	Redwood	Henry	M	50	Miller	Cottage	Wescombe	James	M	60	Agricultural Labourer	
	Redwood	Mary	F	50	-		Wescombe	Grace	F	50	-	
	Redwood	Charles	M	14	-		Wescombe	James	M	7	-	
	Redwood	Thomas	M	11	-		Wescombe	Ann	F	10	-	
	Redwood	Mary	F	20	-	Venlakes	Hutchings	William	M	30	Agricultural Labourer	
Parsonage House	Dinnicombe	Ann	F	50	Independent		Hutchings	Ann	F	20	-	
	Dinnicombe	Ann	F	22	-		Hutchings	Mary	F	1	-	
	Dinnicombe	Mary	F	19	-		Morgan	John	M	10	-	
	Stone	William	M	24	Sadler		Morgan	James	M	10	-	
Cottage	Hancock	John	M	35	Agricultural Labourer	Hill	Tap	Henry	M	40	Agricultural Labourer	
	Hancock	Elizabeth	F	30	-		Tap	Maria	F	40	-	
	Hancock	Mary	F	13	-		Tap	Henry	M	9	-	
	Hancock	William	M	10	-		Tap	James	M	4	-	
	Hancock	John	M	8	-		Tap	Susan	F	7	-	
	Hancock	Robert	M	5	-	Woodend	Burnell	John	M	45	Agricultural Labourer	
	Hancock	James	M	2	-		Burnell	Mary	F	15	-	
Lower Westcombe	Hawkins	John	M	15	Agricultural Labourer		Burnell	Ann	F	15	-	
	Robert	Robert	M	20	Farmer		Burnell	Jane	F	10	-	
Three Gates	Commins	John	M	15	Male Servant		Burnell	William	M	9	-	
	Beedle	Peter	M	70	Farmer	Barton	Stone	William	M	35	Farmer	
	Beedle	Mary	F	60	-		Stone	Ann	F	30	-	
	Beedle	Henry	M	25	-		Parsons	James	M	20	Male Servant	
	Beedle	Thomas	M	20	-		Burton	Thomas	M	13	Male Servant	
	Coles	John	M	13	Male Servant		Greenslade	William	M	17	Male Servant	
Higher Cobbarcombe	Lucas	Thomas	M	70	Farmer		Baker	Mary	F	20	Female Servant	
	Lucas	Elizabeth	F	60	-	Higher Hill	Hunt	William	M	40	Agricultural Labourer	
	Lucas	John	M	30	-		Hunt	Elizabeth	F	45	-	
	Lucas	Elizabeth	F	25	-		Hunt	George	M	10	-	
	Redwood	Elizabeth	F	12	Visitor		Hunt	John	M	8	-	
	Merson	John	M	20	Male Servant		Hunt	Robert	M	3	-	
Lower Hill	Light	Richard	M	35	Farmer		Hunt	James	M	1	-	
	Light	Sarah	F	45	-		Hunt	Elizabeth	F	13	-	
	Light	Mary	F	15	-	Smiths House	Voysey	John	M	50	Black Smith	
	Light	Ann	F	11	-		Voysey	Elizabeth	M	50	-	
	Light	Jane	F	8	-		Vickery	Peter	M	20	Smiths L	
	Light	Louisa	F	3	-		Hawkins	William	M	25	Agricultural Labourer	
	Yes	William	M	25	Male Servant		Hawkins	Ann	F	20	-	
	Lock	Thomas	M	15	Male Servant		Hawkins	Sarah	F	1	-	
Higher Cobbarcombe	Hill	Charlotte	F	20	Female Servant	Stallenge Thorn	Shattock	John	M	60	Farmer	
	Burton	Robert	M	30	Carpenter		Shattock	Shattock	Mary	F	60	-
	Burton	Eleanor	F	25	-		Shattock	William	M	24	-	
	Burton	Mary	F	1	-		Shattock	Charles	M	26	-	
Huntsham Castle	Lock	John	M	25	Agricultural Labourer		Shattock	Alfred	M	21	-	
	Lock	Hannah	F	25	-		Shattock	Edward	M	15	-	
	Lock	Mary	F	2	-		Shattock	Mary	F	14	-	
	Lock	Jane	F	4m	-		Dommett	Mary	F	80	Independent	
Highwood	White	William	M	25	Farmer		Webber	Elizabeth	F	17	Female Servant	
	White	William	M	30	-		Blake	Elizabeth	F	14	Female Servant	
	Warren	William	M	30	Male Servant		Webber	John	M	35	Male Servant	
	Webber	John	M	15	Male Servant		Vickery	Henry	M	15	Male Servant	
	Berry	James	M	12	Male Servant	Cottage	Kerslake	James	M	45	Agricultural Labourer	
	Uppham	Sophia	F	20	Female Servant		Kerslake	Mary	F	58	-	
	Heard	James	M	35	Agricultural Labourer		Roberts	William	M	70	Farmer	
	Burton	Thomas	M	30	Agricultural Labourer		Roberts	Joanna	F	70	-	
	Banks	William	M	60	Agricultural Labourer		Roberts	Michael	M	30	-	
	Williams	John	M	30	Thatcher		Roberts	Ann	F	35	-	
	Williams	Mary	F	30	-		Williams	John	M	11	Male Servant	
	Williams	James	M	5	-		Williams	Sarah	F	3	-	
	Williams	Sarah	F	1	-		Williams	Elizabeth	F	1	-	
	Williams	Elizabeth	F	3	-							